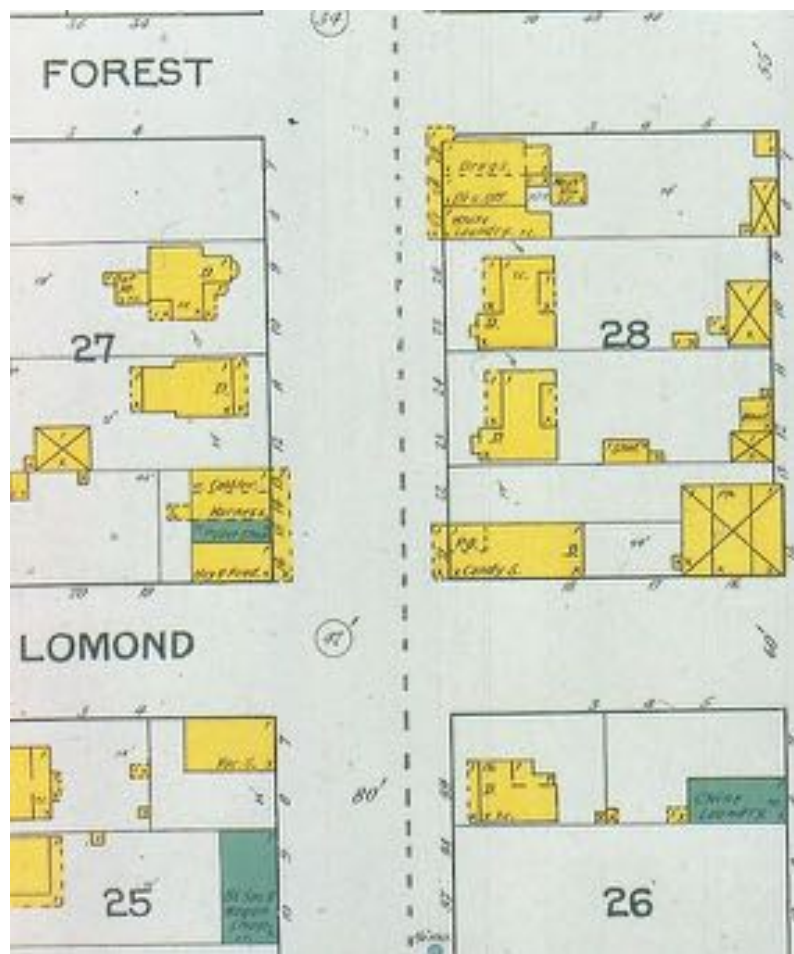


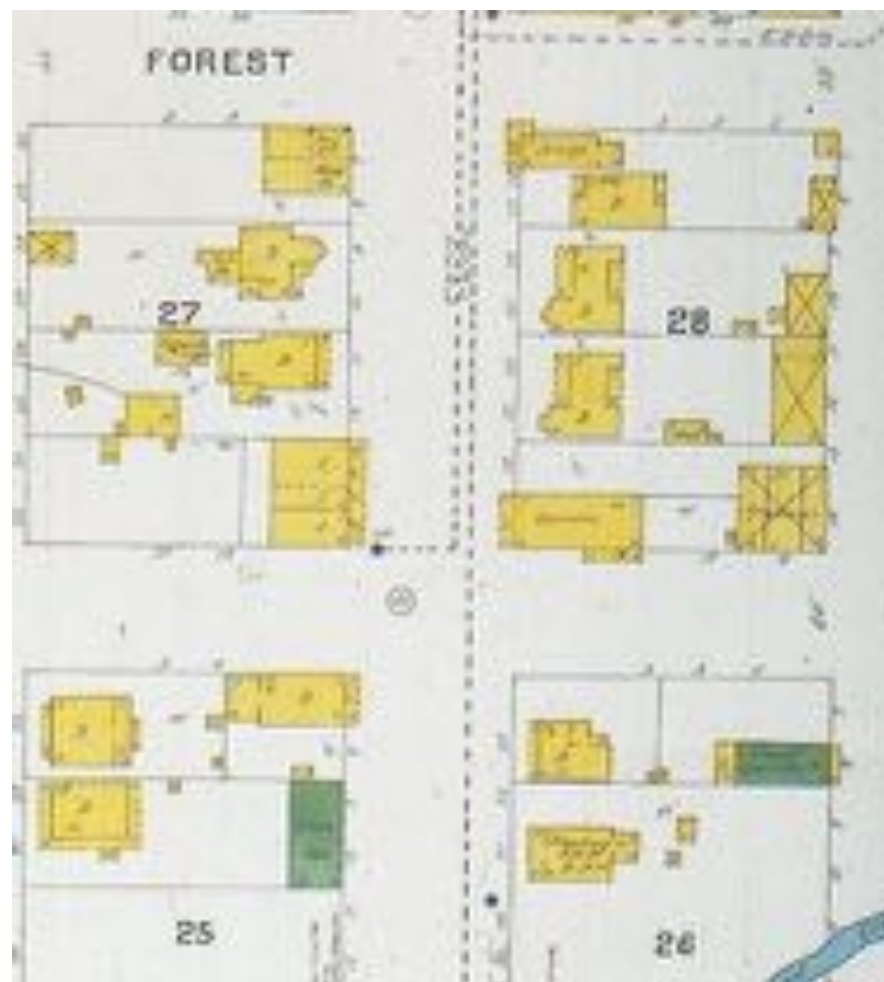


The Oldest Building in Boulder Creek





1892



1897









1908



c. 1926

# California Redwood Park

## CENTRAL AUTO STAGE

Leaves Ben Lomond, 8:00 a.m. Brookdale, 8:30 a.m. Boulder Creek, 9:25 a.m.

CHAS. S. PERKINS

W. L. BAUMGARDNER

PERKINS & BAUMGARDNER

Proprietors of the

BOULDER CREEK

### CENTRAL GARAGE

Drive out cars to all points State Park, round trip, \$1.50

Large parties a specialty Baggage Transfer

Gas and Oil

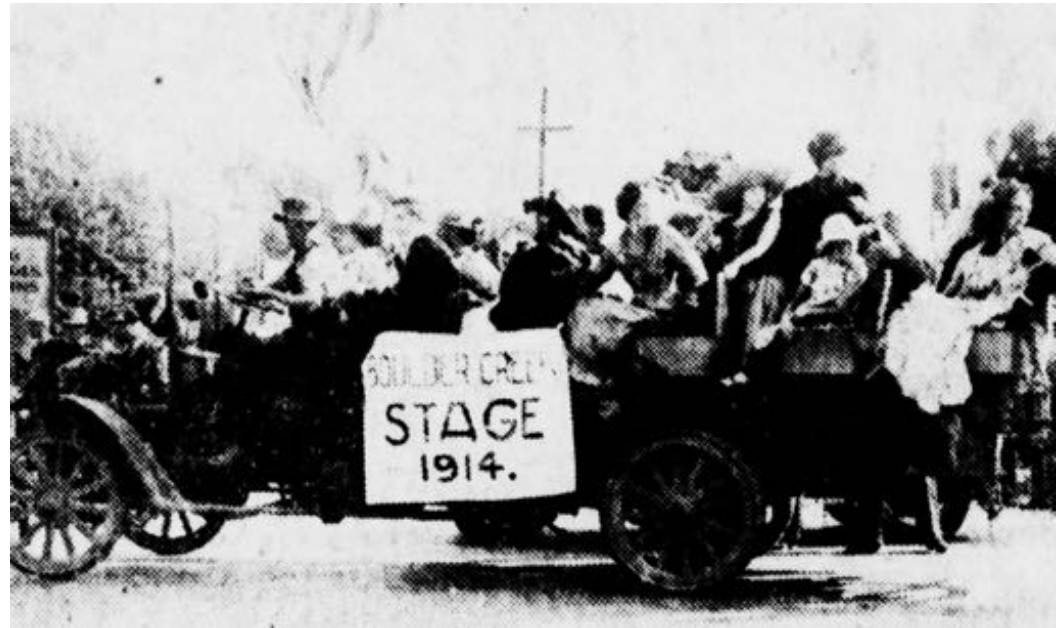
Phone Main 264 or Write

Boulder Creek, Cal.

## Fare, Round Trip, \$1.50

Meets 9:20 a. m. train, returning for 5:55 p. m. train, giving 5 hours at Park

1912-1915



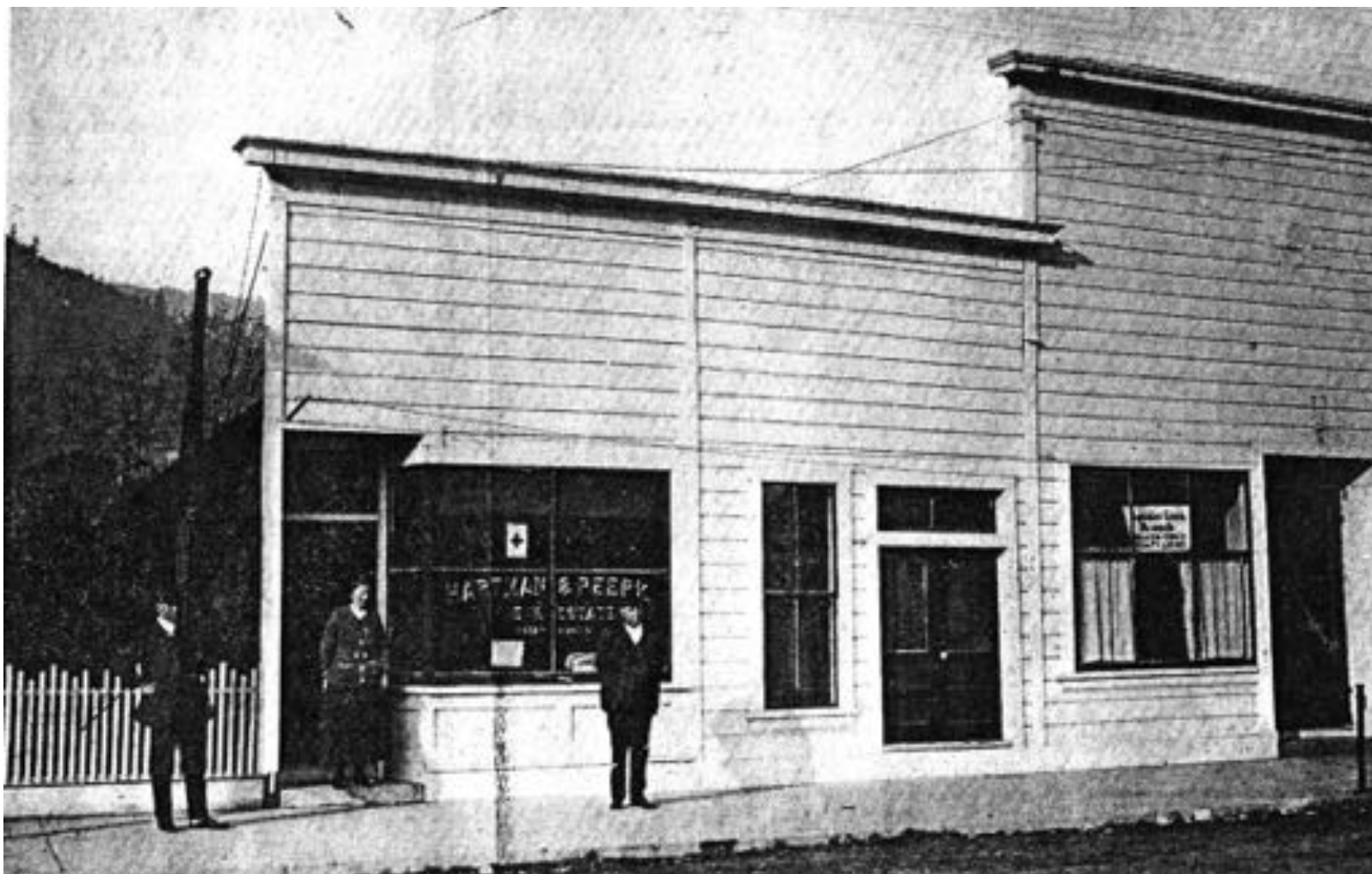




COMMUNITY HALL

BOUCHER CREEK CALIFORNIA

1917-  
1921





*Greetings from Boulder Creek, California*



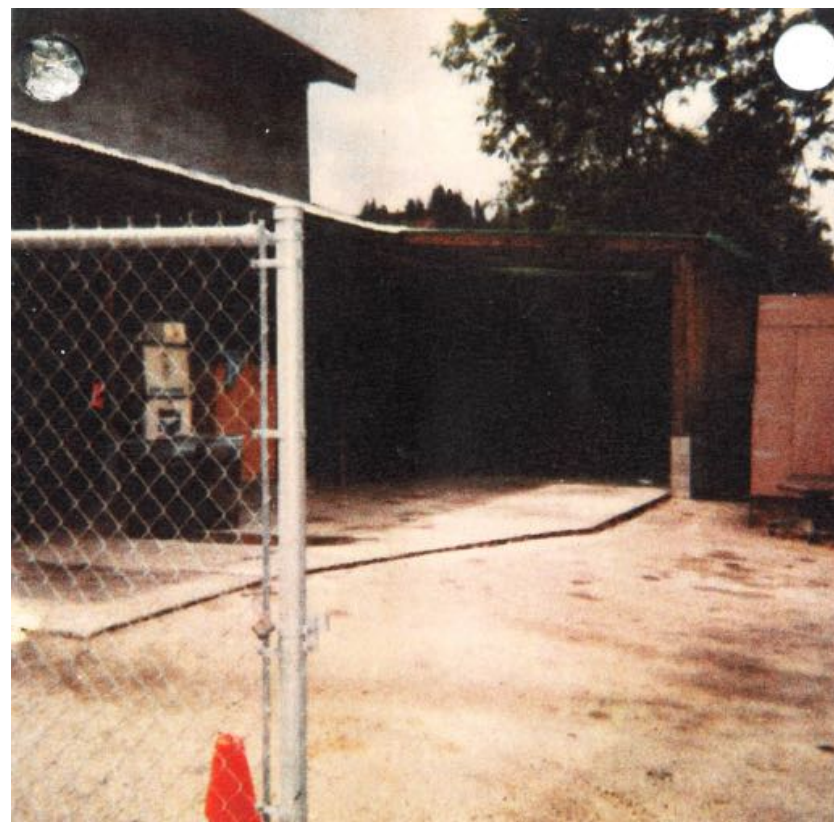
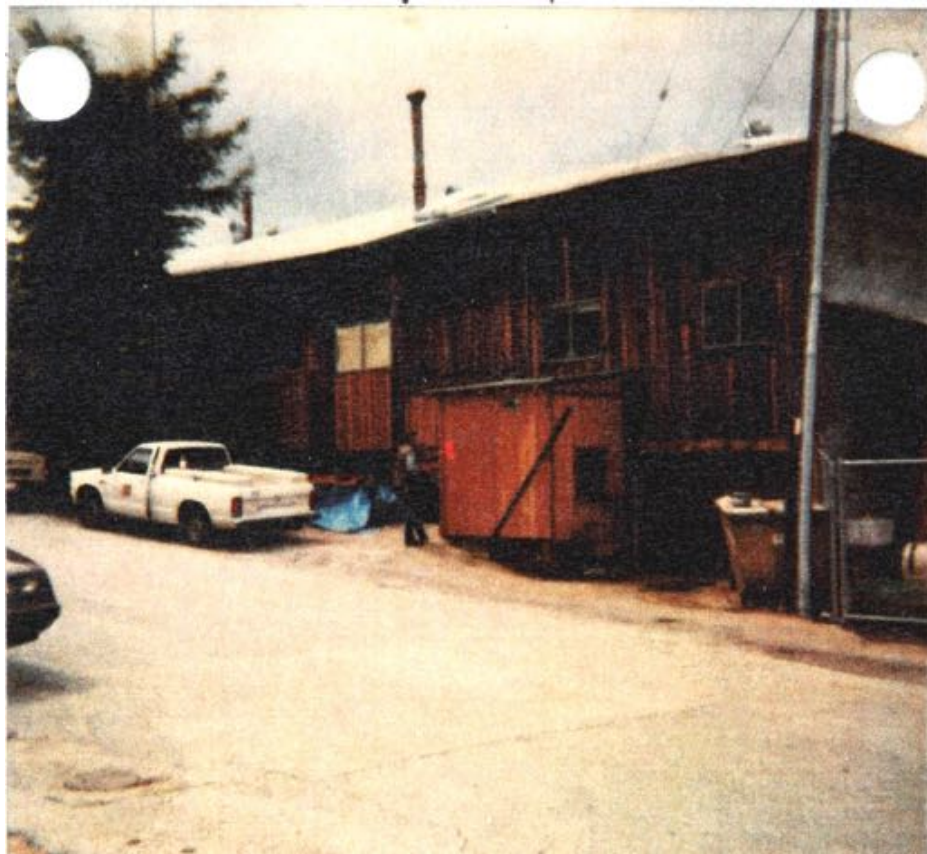


## Water District Takes Over SLV Utilities Firm

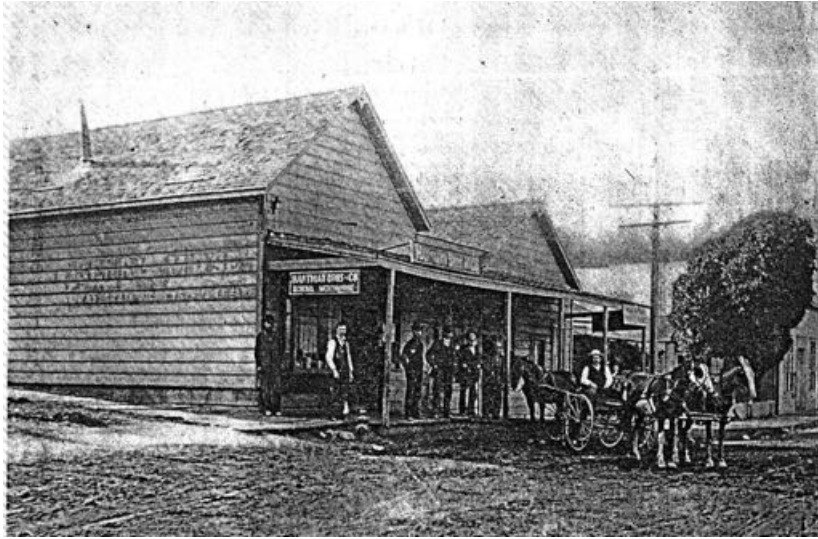
Takeover of the Citizens Utilities water company by the San Lorenzo Valley county water district in Boulder Creek, Ben Lomond and Brookdale has become final.

The county district now has taken over the private firm's offices on Central avenue in Boulder Creek.

1965



1988



Hartman Store 1902



Arco Station 1975

Year	Connections
1965	3000
1970	3700
1980	5134
2000	5200
2009	7450

Year	Workers
1965	10
1993	21
1994	9



Bill Lovejoy/Sentinel

Tina Bisgaard, an accounting clerk for the San Lorenzo Valley Water District, sits at her desk in the existing Boulder Creek office of the district last week. Flush with new funds, the district is considering remodeling its building on Highway 9.

## For water district, cash is burden and opportunity

2001





c.2008